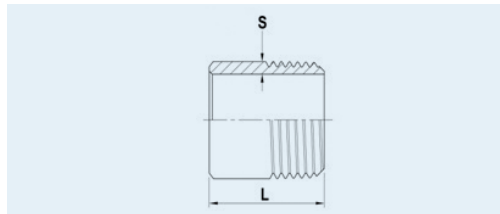


Y-Stück
Y- Piece

Innengewinde / female thread
Material 1.4408 (AISI 316) V4A

307 Y

Rohranschlussmaß			Gewicht		
Nominal Pipe Size			Weight		
(NPS)	A	B	kg	Artikelnummer	
				Item No.	
1/4"	20,0	18,0	0,080	307Y014T	■
3/8"	25,0	20,0	0,110	307Y038T	■
1/2"	30,0	25,0	0,119	307Y012T	■
3/4"	35,0	28,0	0,165	307Y034T	■
1"	41,0	33,0	0,304	307Y100T	■
1 1/4"	50,0	45,0	0,425	307Y114T	■
1 1/2"	52,0	46,0	0,570	307Y112T	■
2"	62,0	52,0	1,045	307Y200T	■



Anschweißnippel
Welding Nipple

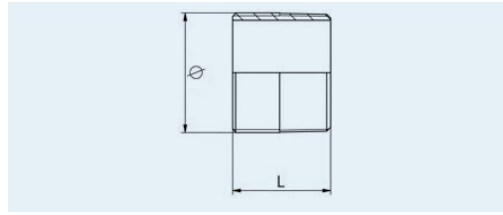
hergestellt aus geschweißtem Rohr
made from welded tubes
ähnlich / analog to DIN EN 10241:2000 (alte / old DIN2982)
Material 1.4571

308

Rohranschlussmaß			Gewicht		
Nominal Pipe Size			Weight		
(NPS)	S	L	kg	Artikelnummer	
				Item No.	
1/8"	2,0	30,0	0,02	308018T	■
1/4"	2,3	30,0	0,02	308014T	■
3/8"	2,3	30,0	0,02	308038T	■
1/2"	2,6	35,0	0,04	308012T	■
3/4"	2,6	40,0	0,05	308034T	■
1"	3,2	40,0	0,08	308100T	■
1 1/4"	3,2	50,0	0,12	308114T	■
1 1/2"	3,2	50,0	0,15	308112T	■
2"	3,6	50,0	0,20	308200T	■
2 1/2"	3,6	60,0	0,30	308212T	■
3"	4,0	70,0	0,46	308300T	■
4"	4,5	80,0	0,91	308400T	■
5"	5,0	90,0	1,22	308500T	■
6"	7,0	120,0	2,74	308600T	■

Alle Maße in mm / All sizes in mm
Technische Änderungen vorbehalten / Technical changes reserved

■ Standard-Lagerartikel / warehouse stock ○ Auftragsbezogene Fertigung / order related production



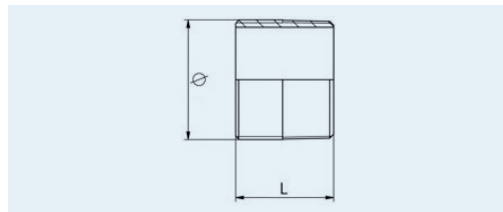
Anschweißnippel Welding Nipple

hergestellt aus nahtlosem Rohr
made from seamless tubes
ähnlich / analog to DIN EN 10241:2000 (alte / old DIN2982)
Material 1.4404 (AISI 316L) V4A

30804

Rohranschlussmaß	Gewicht
Nominal Pipe Size	Weight

(NPS)	Ø	L	kg	Artikelnummer	
				Item No.	
1/8"	10,2	30,0	0,0090	30804018T	■
1/4"	13,5	30,0	0,0150	30804014T	■
3/8"	17,2	30,0	0,0178	30804038T	■
1/2"	21,3	35,0	0,0348	30804012T	■
3/4"	26,9	40,0	0,0510	30804034T	■
1"	33,7	40,0	0,0690	30804100T	■
1 1/4"	42,4	50,0	0,1195	30804114T	■
1 1/2"	48,3	50,0	0,1425	30804112T	■
2"	60,3	50,0	0,1905	30804200T	■
2 1/2"	76,1	60,0	0,2945	30804212T	■
3"	88,9	70,0	0,4800	30804300T	■
4"	114,3	80,0	0,7200	30804400T	■



Anschweißnippel Welding Nipple

hergestellt aus nahtlosem Rohr
made from seamless tubes
ähnlich / analog to DIN EN 10241:2000 (alte / old DIN2982)
Material 1.4307 (AISI 304L) V2A

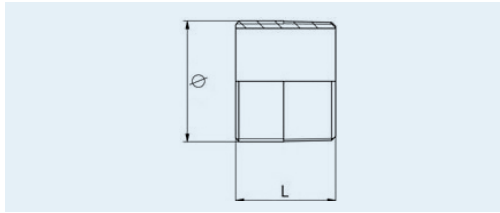
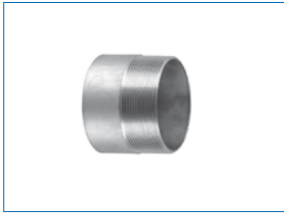
30807

Rohranschlussmaß	Gewicht
Nominal Pipe Size	Weight

(NPS)	Ø	L	kg	Artikelnummer	
				Item No.	
1/8"	10,2	30,0	0,0090	30807018T	■
1/4"	13,5	30,0	0,0150	30807014T	■
3/8"	17,2	30,0	0,0178	30807038T	■
1/2"	21,3	35,0	0,0348	30807012T	■
3/4"	26,9	40,0	0,0510	30807034T	■
1"	33,7	40,0	0,0690	30807100T	■
1 1/4"	42,4	50,0	0,1195	30807114T	■
1 1/2"	48,3	50,0	0,1425	30807112T	■
2"	60,3	50,0	0,1905	30807200T	■
2 1/2"	76,1	60,0	0,2945	30807212T	■
3"	88,9	70,0	0,4800	30807300T	■
4"	114,3	80,0	0,7200	30807400T	■

Alle Maße in mm / All sizes in mm
Technische Änderungen vorbehalten / Technical changes reserved

■ Standard-Lagerartikel / warehouse stock ○ Auftragsbezogene Fertigung / order related production



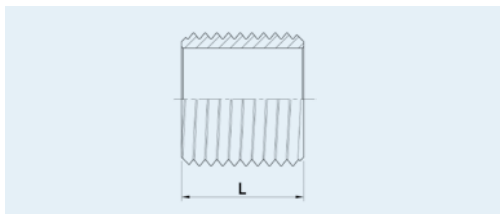
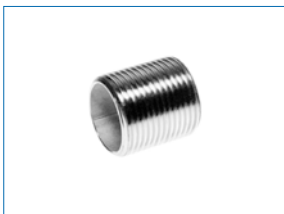
Anschweißnippel Welding Nipple

ähnlich / analog to DIN EN 10241:2000 (alte / old DIN2982)
 Material 1.4408 (AISI 316) V4A

30816

Rohranschlussmaß	Gewicht
Nominal Pipe Size	Weight

(NPS)	Ø	L	kg	Artikelnummer	
				Item No.	
1/8"	10,2	30,0	0,0090	30816018T	○
1/4"	14,0	30,0	0,0150	30816014T	■
3/8"	17,0	30,0	0,0200	30816038T	■
1/2"	21,5	35,0	0,0310	30816012T	■
3/4"	26,8	40,0	0,0600	30816034T	■
1"	34,0	40,0	0,0725	30816100T	■
1 1/4"	42,7	50,0	0,1350	30816114T	■
1 1/2"	48,8	50,0	0,1325	30816112T	■
2"	61,0	50,0	0,2070	30816200T	■
2 1/2"	77,5	60,0	0,4500	30816212T	■
3"	90,0	70,0	0,6300	30816300T	■
4"	115,8	80,0	1,0400	30816400T	■



Rohnippel Running Nipple

hergestellt aus geschweißtem Rohr
 made from welded tubes
 ähnlich / analog to DIN EN 10241:2000 (alte / old DIN 2982)
 Material 1.4571

309

Rohranschlussmaß	Gewicht
Nominal Pipe Size	Weight

(NPS)	L	kg	Artikelnummer	
			Item No.	
1/8"	16,0	0,003	309018T	■
1/4"	18,0	0,005	309014T	■
3/8"	22,0	0,009	309038T	■
1/2"	25,0	0,018	309012T	■
3/4"	30,0	0,026	309034T	■
1"	35,0	0,042	309100T	■
1 1/4"	38,0	0,066	309114T	■
1 1/2"	38,0	0,072	309112T	■
2"	45,0	0,122	309200T	■
2 1/2"	55,0	0,210	309212T	■
3"	60,0	0,310	309300T	■
4"	70,0	0,540	309400T	■
5"	85,0	1,430	309500T	○
6"	100,0	1,890	309600T	○

Alle Maße in mm / All sizes in mm
 Technische Änderungen vorbehalten / Technical changes reserved

■ Standard-Lagerartikel / warehouse stock ○ Auftragsbezogene Fertigung / order related production